



Customer: Centre Manufacturing LLC

Address: 9809 Hamilton Road
Eden Prairie, MN 55344

Sample ID: Canviva Ultra 1K03

Matrix: Tincture

Labnumber: 21K0219-04 Total mass or volume per unit (g or mL): 30

Density (g/mL): .9218

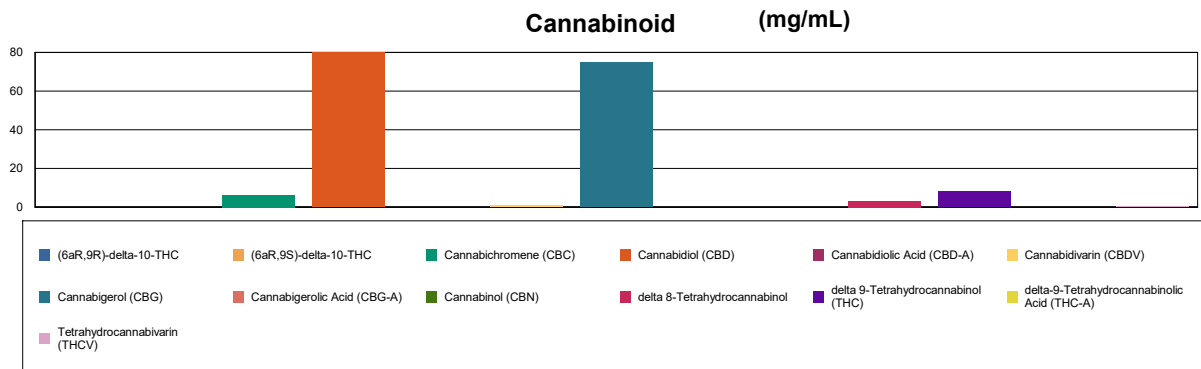
Cannabinoid Profile

Test Conditions: 20°C
Extraction Technician: SH
Analytical Chemist: SH

Extraction Date(s)	Analysis Date(s)
11/29/2021	11/30/2021

Cannabinoids (HPLC)	Results			
	LOD (mg/mL)	%	mg/mL	mg/Bottle
Cannabidiol (CBD)		8.47	84.7	2541
delta 9-Tetrahydrocannabinol (THC)		0.19	1.90	57
delta 8-Tetrahydrocannabinol		0.31	3.14	94.3
Cannabidiol (CBD)		8.35	83.5	2504
Cannabigerol (CBG)		8.47	84.7	2541
Cannabigerolic Acid (CBG-A)	<0.20			
Cannabidiolic Acid (CBD-A)	<0.20			
Cannabidivarin (CBDV)		0.11	1.06	31.9
Tetrahydrocannabivarin (THCV)		0.02	0.192	5.75
Cannabinol (CBN)	<0.20			
Cannabichromene (CBC)		0.62	6.24	187
delta 9-Tetrahydrocannabinol (THC)		0.19	1.90	57
delta-9-Tetrahydrocannabinolic Acid (THC-A)	<0.30			
delta 8-Tetrahydrocannabinol		0.31	3.14	94.3
(6aR,9S)-delta-10-THC	<0.30			
(6aR,9R)-delta-10-THC	<0.30			
Cannabinoids Total		%	mg/mL	
Max Active THC (delta-9-tetrahydrocannabinol)		0.19	1.90	
Max Active CBD		8.48	84.80	
T.Active Cannabinoids		16.90	169.00	
Total Cannabinoids		17.30	173.00	

Following USDA guidelines on uncertainty, Altitude Consulting's uncertainty is calculated to be +/- 2% for all cannabinoids using a coverage factor of 2 (95% confidence interval). Measurement uncertainty has not been factored into reported values.
Blank results indicate the compound was below the limit of detection.



Gary Brook - Laboratory Director - 12/1/2021

Reporting Limits will vary based on sample extraction weight used for the analysis.

The results of this report are based solely on the sample submitted and cannot be reproduced. Decision Rule: Measurement uncertainty is not accounted for in the reported values. Results are based solely on calculated numbers. Altitude Consulting makes no Statements of conformity. **Pesticide, metal, and microbial analyses are subcontracted to ISO 17025 laboratories.**