



Customer: **CANVIVA**
 Customer Sample ID: **CANVIVA Restore 500mg Lot# 9F11**
 Laboratory Number: **19G0046-07**

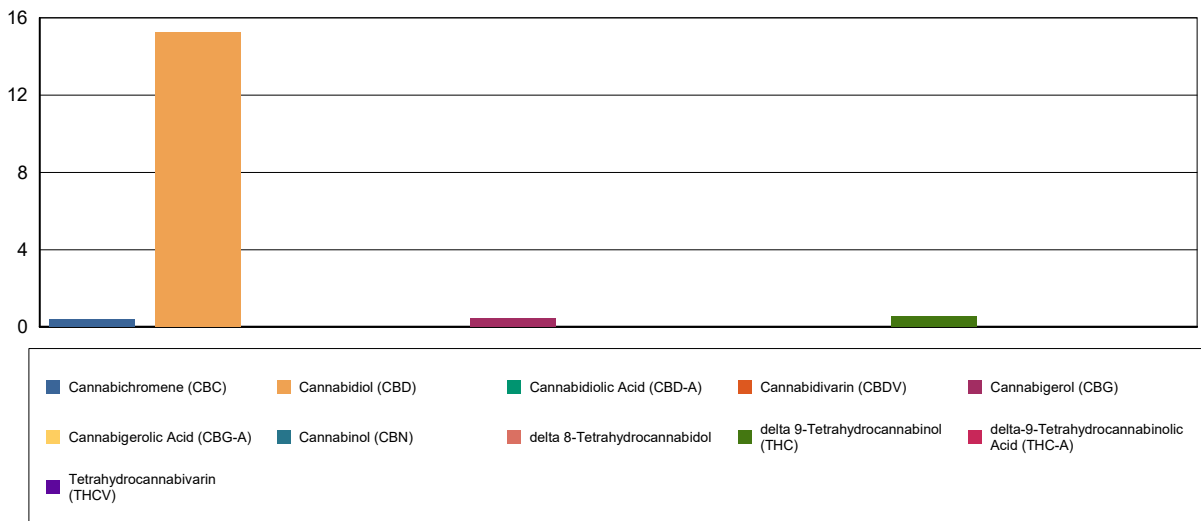
Cannabinoid Profile

Extraction Technician: CB
 Analytical Chemist: Altitude

Extraction Date(s)	Analysis Date(s)
7/30/2019	7/30/2019

Cannabinoids (HPLC)		Results	
	LOD (mg/mL)	%	mg/mL
Cannabidivarin (CBDV)	<0.0828		
Cannabidiolic Acid (CBD-A)	<0.0828		
Cannabigerolic Acid (CBG-A)	<0.0828		
Cannabigerol (CBG)		0.05	0.441
Cannabidiol (CBD)		1.76	17.2
Tetrahydrocannabivarin (THCV)	<0.0828		
Cannabinol (CBN)	<0.0828		
delta 9-Tetrahydrocannabinol (THC)		0.06	0.551
delta 8-Tetrahydrocannabinol	<0.0828		
Cannabichromene (CBC)		0.04	0.409
delta-9-Tetrahydrocannabinolic Acid (THC-A)	<0.0828		
Cannabinoids Total		%	mg/mL
Max Active THC		0.06	0.55
Max Active CBD		1.76	17.20
T.Active Cannabinoids		1.91	18.6
Total Cannabinoids		1.91	18.6
Ratios			
27.66:1 CBD to THC		0.04:1 THC to CBD	

Cannabinoid (mg/mL)



Altitude Consulting, LLC utilizes NIST traceable Reference Standards and Certified Reference Material to calibrate analytical instruments along with proven analytical methods. The methods are applied in the most ethical manner following good laboratory practice guidelines. The results of this report are based solely on the sample submitted and cannot be reproduced.



Customer: **CANVIVA**
 Customer Sample ID: **CANVIVA Restore 500mg Lot# 9F11**
 Laboratory Number: **19G0046-07**

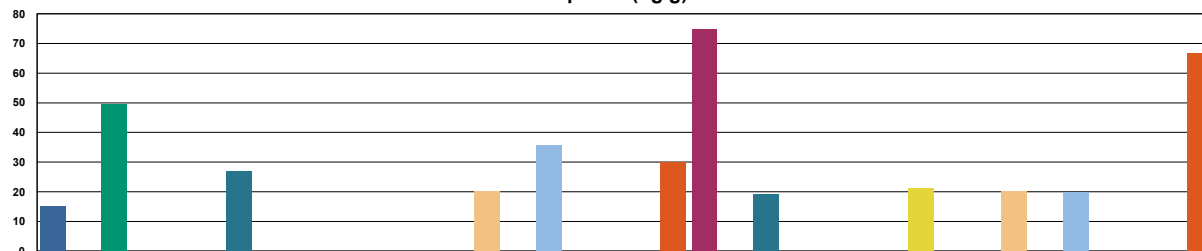
Terpene Profile

Extraction Technician: CB
 Analytical Chemist: GB

Extraction Date(s)	Analysis Date(s)
7/30/2019	7/30/2019

Terpene	Results	Terpene	Results
	ug/g		ug/g
alpha-Pinene		Isoborneol	
Camphene	49.6	Hexahydrothymol	
Sabinene		(+)-Borneol and (-)-Borneol	
beta-Pinene and beta-Myrcene		alpha-Terpineol	
p-Mentha-1,5-diene		gamma-Terpeneol	
(1S)-(+)-3-Carene		Nerol	
alpha-Terpinene		Geraniol	
Ocimene Peak 1	20.4	(+)-Pulegone	
(R) - (+)-Limonene	35.6	Geranyl Acetate	
Ocimene Peak 2		alpha-Cedrene	
Eucalyptol (1,8-Cineole)	29.9	trans-Caryophyllene	74.9
gamma-Terpinene		alpha-Humulene	19.1
Sabinene Hydrate		Valencene	
Terpinolene		cis-Nerolidol	
Linalool	21.3	trans-Nerolidol	
(+)-Fenchone and L(-)-Fenchone		Guaiol	20.4
(1R)-Endo-(+)-Fenchyl		(-)-Caryophyllene Oxide	19.8
(-)-Isopulegol		(+)-Cedrol	
Camphor and (1S)-(-)-Camphor		(-)-alpha-Bisabolol (Levomenol)	66.7

Terpenes (ug/g)



- alpha-Pinene
- Eucalyptol (1,8-Cineole)
- Hexahydrothymol
- alpha-Humulene
- Camphene
- gamma-Terpinene
- (+)-Borneol and (-)-Borneol
- Valencene
- Sabinene
- Sabinene Hydrate
- alpha-Terpineol
- cis-Nerolidol
- beta-Pinene and beta-Myrcene
- Terpinolene
- gamma-Terpeneol
- trans-Nerolidol
- p-Mentha-1,5-diene
- Linalool
- Nerol
- Guaiol
- (1S)-(+)-3-Carene
- (+)-Fenchone and L(-)-Fenchone
- Geraniol
- (-)-Caryophyllene Oxide
- alpha-Terpinene
- (1R)-Endo-(+)-Fenchyl
- (+)-Pulegone
- (+)-Cedrol
- Ocimene Peak 1
- (-)-Isopulegol
- Geranyl Acetate
- (-)-alpha-Bisabolol (Levomenol)
- (R) - (+)-Limonene
- Camphor and (1S)-(-)-Camphor
- alpha-Cedrene
- Ocimene Peak 2
- Isoborneol
- trans-Caryophyllene

Reporting limit is roughly 40 ug/g depending on amount extracted.

Altitude Consulting, LLC utilizes NIST traceable Reference Standards and Certified Reference Material to calibrate analytical instruments along with proven analytical methods. The methods are applied in the most ethical manner following good laboratory practice guidelines. The results of this report are based solely on the sample submitted and cannot be reproduced.