



Customer: **CANVIVA**  
 Customer Sample ID: **CANVIA Focus 500mg Lot #9F17**  
 Laboratory Number: **19H0058-09**

Density: **0.9164**

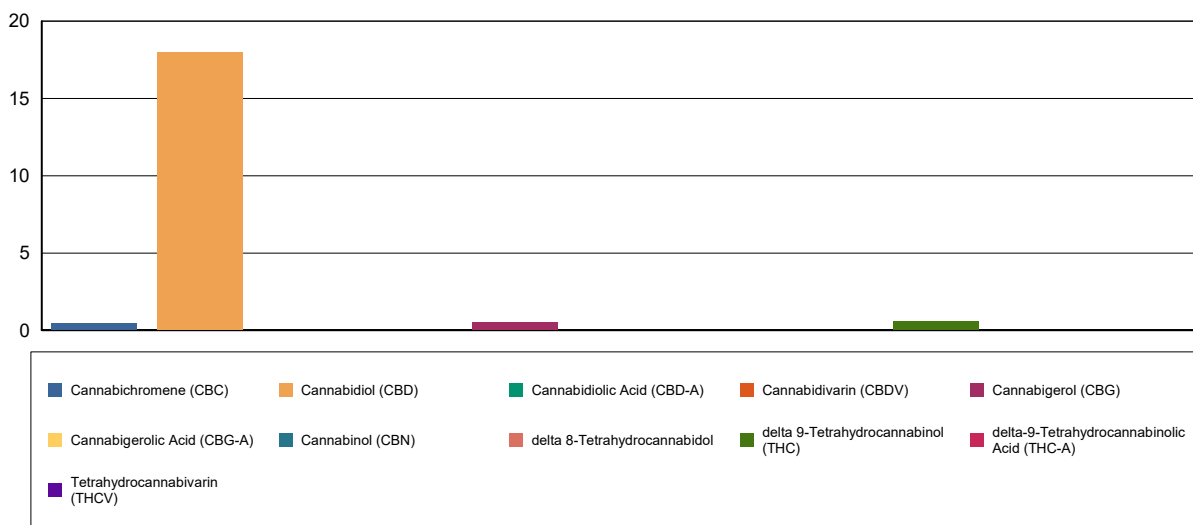
## Cannabinoid Profile

Extraction Technician: CB  
 Analytical Chemist: Altitude

Extraction Date(s)	Analysis Date(s)
7/30/2019	7/30/2019

Cannabinoids (HPLC)		Results	
	LOD (mg/mL)	%	mg/mL
Cannabidivarin (CBDV)	<0.082476		
Cannabidiolic Acid (CBD-A)	<0.082476		
Cannabigerolic Acid (CBG-A)	<0.082476		
Cannabigerol (CBG)		0.05	0.512
Cannabidiol (CBD)		1.80	18.0
Tetrahydrocannabivarin (THCV)	<0.082476		
Cannabinol (CBN)	<0.082476		
delta 9-Tetrahydrocannabinol (THC)		0.06	0.592
delta 8-Tetrahydrocannabinol	<0.082476		
Cannabichromene (CBC)		0.04	0.438
delta-9-Tetrahydrocannabinolic Acid (THC-A)	<0.082476		
Cannabinoids Total		%	mg/mL
Max Active THC		0.06	0.59
Max Active CBD		1.80	18.00
T.Active Cannabinoids		1.95	19.5
Total Cannabinoids		1.95	19.5
Ratios			
<b>30.33:1 CBD to THC</b>		<b>0.03:1 THC to CBD</b>	

### Cannabinoid (mg/mL)



Altitude Consulting, LLC utilizes NIST traceable Reference Standards and Certified Reference Material to calibrate analytical instruments along with proven analytical methods. The methods are applied in the most ethical manner following good laboratory practice guidelines. The results of this report are based solely on the sample submitted and cannot be reproduced.



Customer: **CANVIVA**  
 Customer Sample ID: **CANVIA Focus 500mg Lot #9F17**  
 Laboratory Number: **19H0058-09**

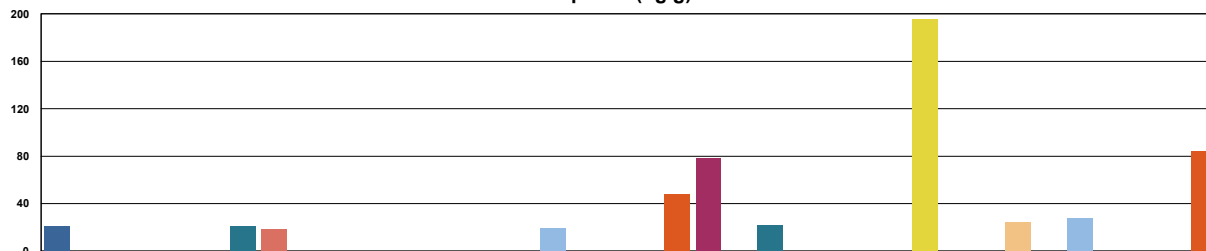
## Terpene Profile

Extraction Technician: CB  
 Analytical Chemist: GB

Extraction Date(s)	Analysis Date(s)
7/30/2019	7/30/2019

Terpene	Results	Terpene	Results
	ug/g		ug/g
alpha-Pinene	21.3	Isoborneol	
Camphene		Hexahydrothymol	
Sabinene		(+)-Borneol and (-)-Borneol	
beta-Pinene and beta-Myrcene		alpha-Terpeneol	
p-Mentha-1,5-diene		gamma-Terpeneol	
(1S)-(+)-3-Carene		Nerol	
alpha-Terpinene		Geraniol	
Ocimene Peak 1		(+)-Pulegone	
(R) - (+)-Limonene		Geranyl Acetate	
Ocimene Peak 2		alpha-Cedrene	
Eucalyptol (1,8-Cineole)	47.7	trans-Caryophyllene	78.2
gamma-Terpinene		alpha-Humulene	21.7
Sabinene Hydrate		Valencene	
Terpinolene		cis-Nerolidol	
Linalool	195	trans-Nerolidol	
(+)-Fenchone and L(-)-Fenchone		Guaiol	24.6
(1R)-Endo-(+)-Fenchyl		(-)-Caryophyllene Oxide	27.8
(-)-Isopulegol		(+)-Cedrol	
Camphor and (1S)-(-)-Camphor		(-)-alpha-Bisabolol (Levomenol)	84.1

Terpenes (ug/g)



- |                              |                                |                             |                                 |
|------------------------------|--------------------------------|-----------------------------|---------------------------------|
| alpha-Pinene                 | Eucalyptol (1,8-Cineole)       | Hexahydrothymol             | alpha-Humulene                  |
| Camphene                     | gamma-Terpinene                | (+)-Borneol and (-)-Borneol | Valencene                       |
| Sabinene                     | Sabinene Hydrate               | alpha-Terpeneol             | cis-Nerolidol                   |
| beta-Pinene and beta-Myrcene | Terpinolene                    | gamma-Terpeneol             | trans-Nerolidol                 |
| p-Mentha-1,5-diene           | Linalool                       | Nerol                       | Guaiol                          |
| (1S)-(+)-3-Carene            | (+)-Fenchone and L(-)-Fenchone | Geraniol                    | (-)-Caryophyllene Oxide         |
| alpha-Terpinene              | (1R)-Endo-(+)-Fenchyl          | (+)-Pulegone                | (+)-Cedrol                      |
| Ocimene Peak 1               | (-)-Isopulegol                 | Geranyl Acetate             | (-)-alpha-Bisabolol (Levomenol) |
| (R) - (+)-Limonene           | Camphor and (1S)-(-)-Camphor   | alpha-Cedrene               |                                 |
| Ocimene Peak 2               | Isoborneol                     | trans-Caryophyllene         |                                 |

Reporting limit is roughly 40 ug/g depending on amount extracted.

Altitude Consulting, LLC utilizes NIST traceable Reference Standards and Certified Reference Material to calibrate analytical instruments along with proven analytical methods. The methods are applied in the most ethical manner following good laboratory practice guidelines. The results of this report are based solely on the sample submitted and cannot be reproduced.